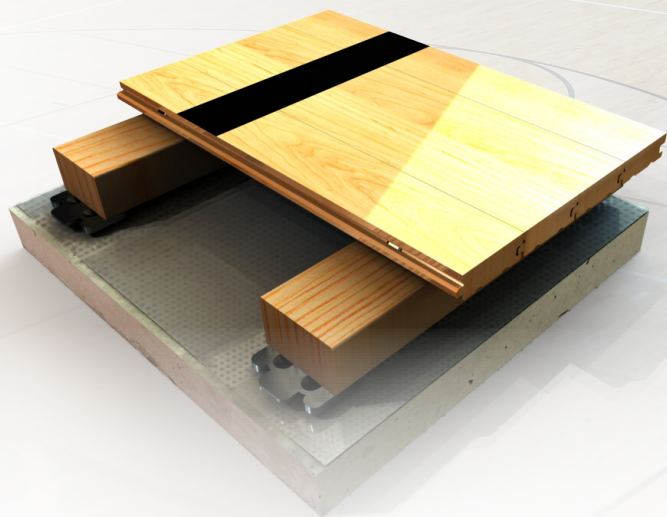


# AIR-CHANNEL® CLASSIC

(WITHOUT SUBFLOOR- FLOATING)



## STABILITY, PERFORMANCE AND LONGEVITY



Air Channel Classic takes commodity floating sleeper system technology and adds a whole new dimension of resilience and uniformity. This economical suspended system features enhanced pad components for added value in a basic commodity design. The double profiled, cavity-backed, 7/16" EPDM rubber Bio-Pads offers greater durability and higher performance values than most commodity pad designs.

- Continuous Strip® XL Maple provides uniformity & strength under bleacher loads and portable backstops
- High-Profile and Economical
- Other pad options for tuned resiliency



robbinsfloor.com | 1.800.543.1913

Robbins, Inc. | 4777 Eastern Avenue | Cincinnati, OH 45226

MAPLE FLOORING SYSTEMS

# AIR-CHANNEL® CLASSIC

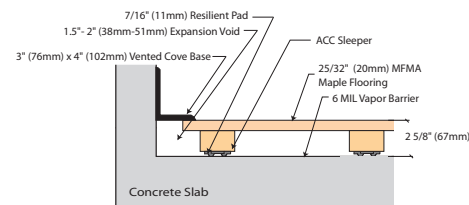
## (WITHOUT SUBFLOOR- FLOATING)



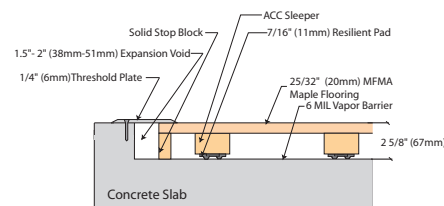
### Product Specifications

System Type	Floating
Slab Depression	2 5/8" (67mm) with 25/32" (20mm) maple 2 7/8" (73mm) with 33/32" (26mm) maple
Surface- MFMA Northern Hard Maple	Robbins Continuous Strip® XL (FJ) or Random Length (RL)
LEED Contributions	MR credit 4, 5, & 7 IEQ 4.1, 4.2, 4.3, 4.4 FSC® Lumber Available <i>*Credits are based on products selected and location of facility</i>
Sleeper Construction	Nominal 2" x 3" x 4' long fir or pine
Resilience Layer	7/16" EPDM Bio-Pad
Optional Construction	Contact a Robbins Representative for Alternative Systems
Warranty 	1 year Industry Standard with optional Extended Warranty Program ( <i>Egis Floorlife</i> )
Air-Channel Family Reference Facilities	Oklahoma University University of Mississippi Robert F. Kennedy High School Trump Tower- Panama University of Michigan

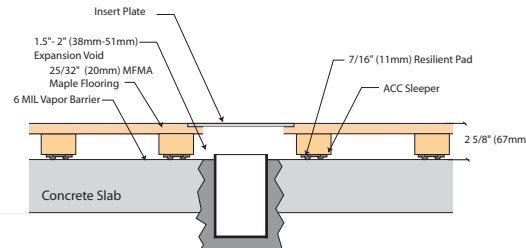
Wall View



Threshold View



Equipment View



robbinsfloor.com | 1.800.543.1913

Robbins, Inc. | 4777 Eastern Avenue | Cincinnati, OH 45226

All Rights Reserved. © 2012 Robbins, Inc. ACC201204